

TwinRivers FACILITIES

Facilities that inspire extraordinary achievement ...

the Decades Plan

Facilities that inspire extraordinary achievement ...

the Decades Plan

COMPONENTS

District Master Plan
Project Delivery
Funding Alternatives
Community Involvement
Facility Use
Deferred Maintenance
Re-purpose Property

METHODS

Transparency
Communication
Customer Focus
Quality Control
Best Practices
Process Improve
Teamwork

PROJECT REQUESTS

Facilities that inspire extraordinary achievement ...
the Decades Plan

Summer 2011 = 26% of sites = \$12 million

Additional Requests = 82% of sites

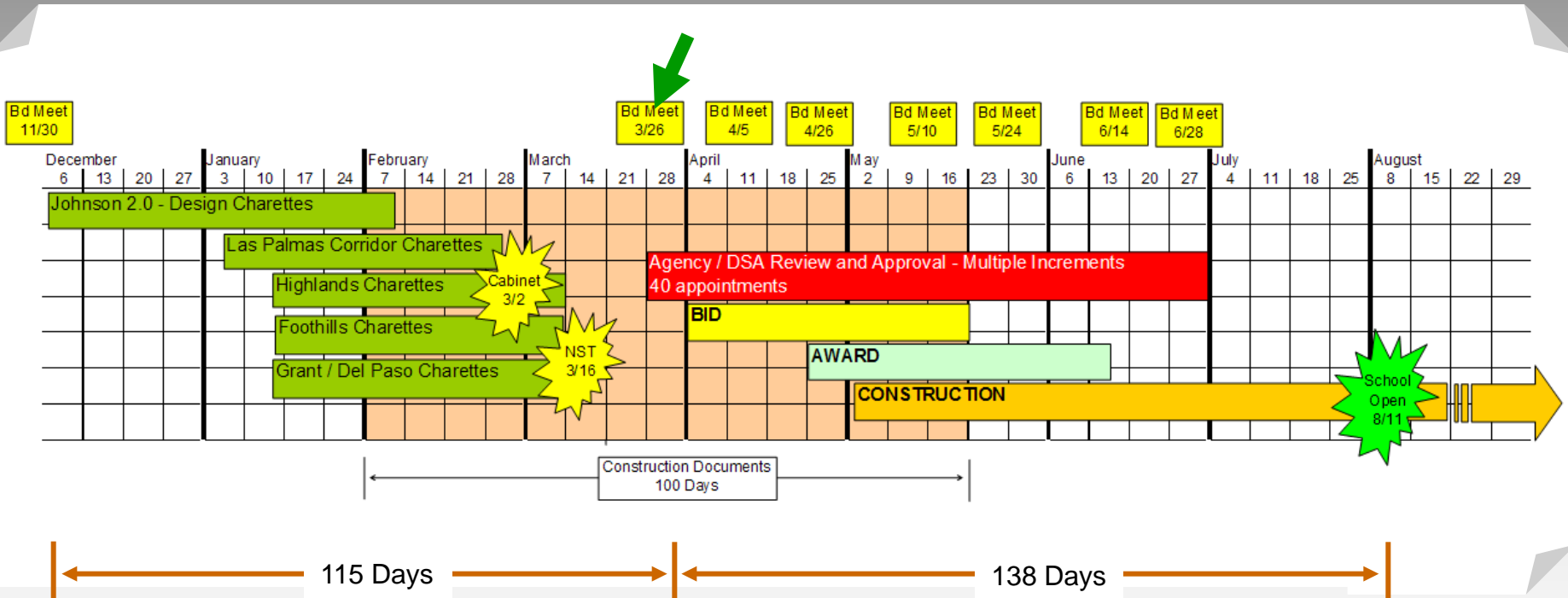
59% Elementary

33% High Schools

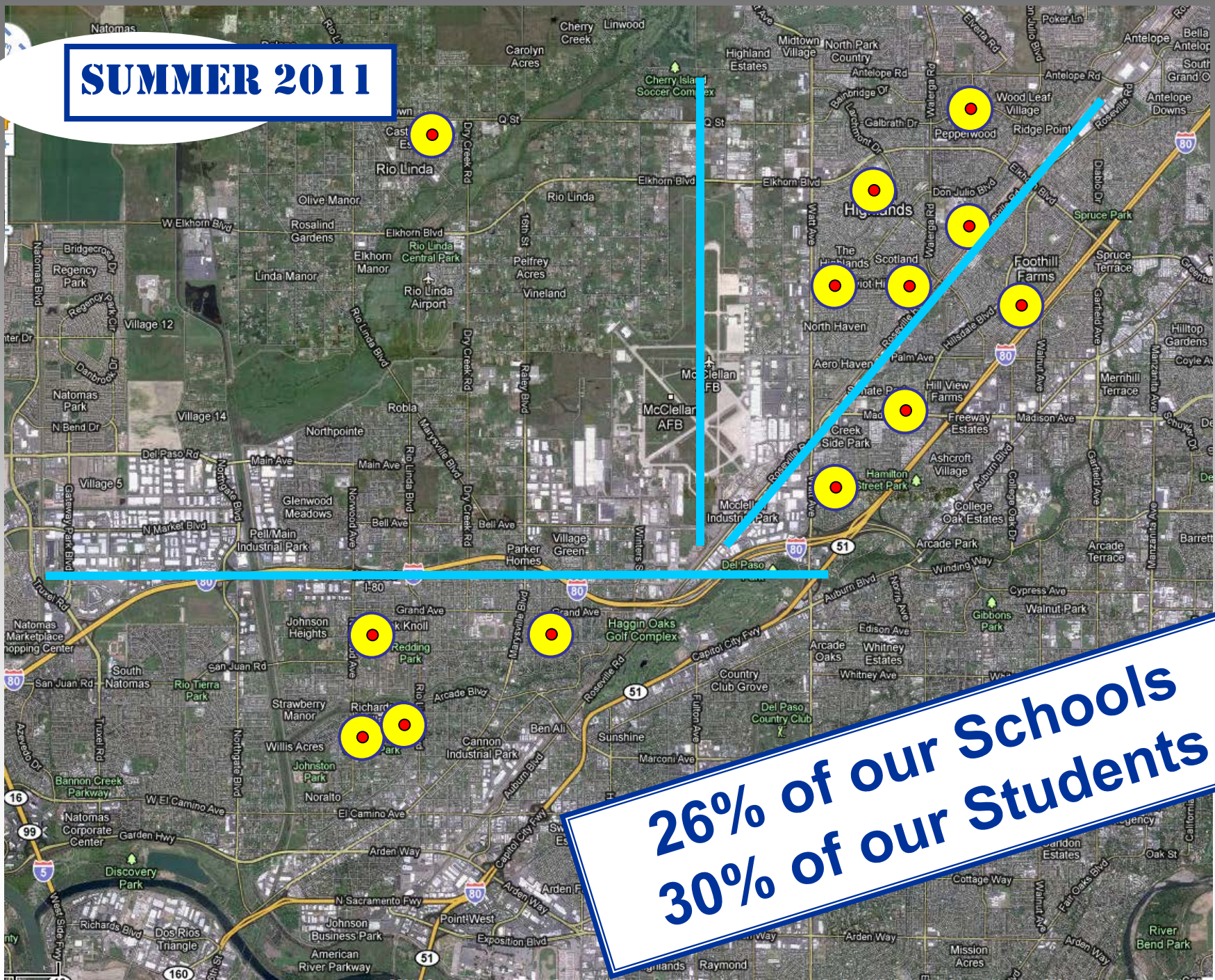
8% Other

TIME TO DELIVERY

Facilities that inspire extraordinary achievement ...
the Decades Plan



SUMMER 2011



**26% of our Schools
30% of our Students**

MAJOR PROJECT SITES

Facilities that inspire extraordinary achievement ...
the Decades Plan

Castori ES preK-6
Del Paso ES preK-6
Foothill Farms ES 5-8
Hillsdale ES K-8
Johnson 2.0 ES 3-6
Joyce ES preK-8
Kohler ES preK-8

Madison ES preK-6
Noralto ES preK-2
Oakdale ES preK-8
Orchard ES preK-8
Ridgepoint ES K-8
Village ES K-8

ROANOKE AVENUE

Castori ES

HMRARCHITECTS



MAHOGANY STREET

LEGEND

- NURSERY AND PRE-K
- CLASSROOM, ADMIN, LIBRARY AND MULTI-USE BUILDINGS
- SHADE STRUCTURE
- TURF/LANDSCAPING
- APPARATUS SOFTSCAPE PLAY AREA
- ASPHALT PAVING, HARDSCAPE PLAY AREA
- CONCRETE PAVING



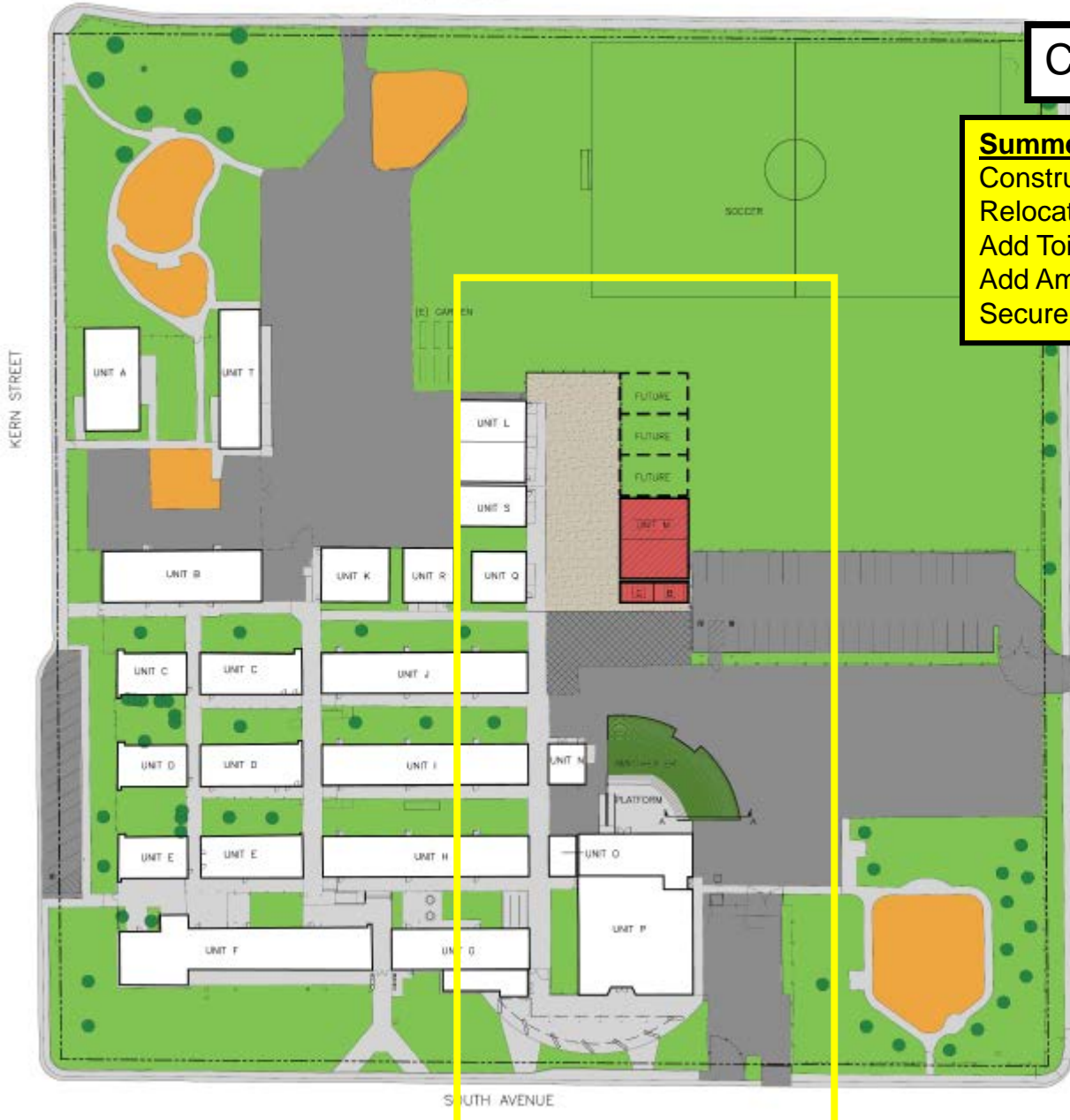
SECTION A-A
AT AMPITHEATER



ROANOKE AVENUE

Castori ES

Summer 2011 – Phase 1
 Construct Quad Area
 Relocate Rooms #25/26
 Add Toilet Building
 Add Amphitheater Seating
 Secure South Ave Driveway



MAHOGANY ST

- LEGEND**
- NEW OUTDOOR LEARNING ENVIRONMENT (HARD & SOFTSCAPE WORK)
 - NEW ASPHALT PAVING
 - RELOCATED PORTABLE CLASSROOM
 - NEW STUDENT RESTROOM PORTABLE BUILDING
 - AMPHITHEATER
 - (E) BUILDINGS
 - (E) TURF/LANDSCAPING
 - (E) APPARATUS SOFTSCAPE PLAY AREA
 - (E) ASPHALT PAVING, HARDSCAPE PLAY AREA
 - (E) CONCRETE PAVING



SECTION A-A AT AMPHITHEATER



SOUTH AVENUE

Del Paso ES



Outdoor Learning Environments

Parent Drop Off & Parking

MOREY AVE.

Hard Court

KESNER AVE.

TAYLOR STREET

New Multipurpose Room

New Admin.

(E) Classroom

New Classroom Building

(E) Classroom

Quad

(E) Kinder

(E) Classroom

Play Apparatus

New PK

Parent Drop Off & Parking

Bus Drop Off

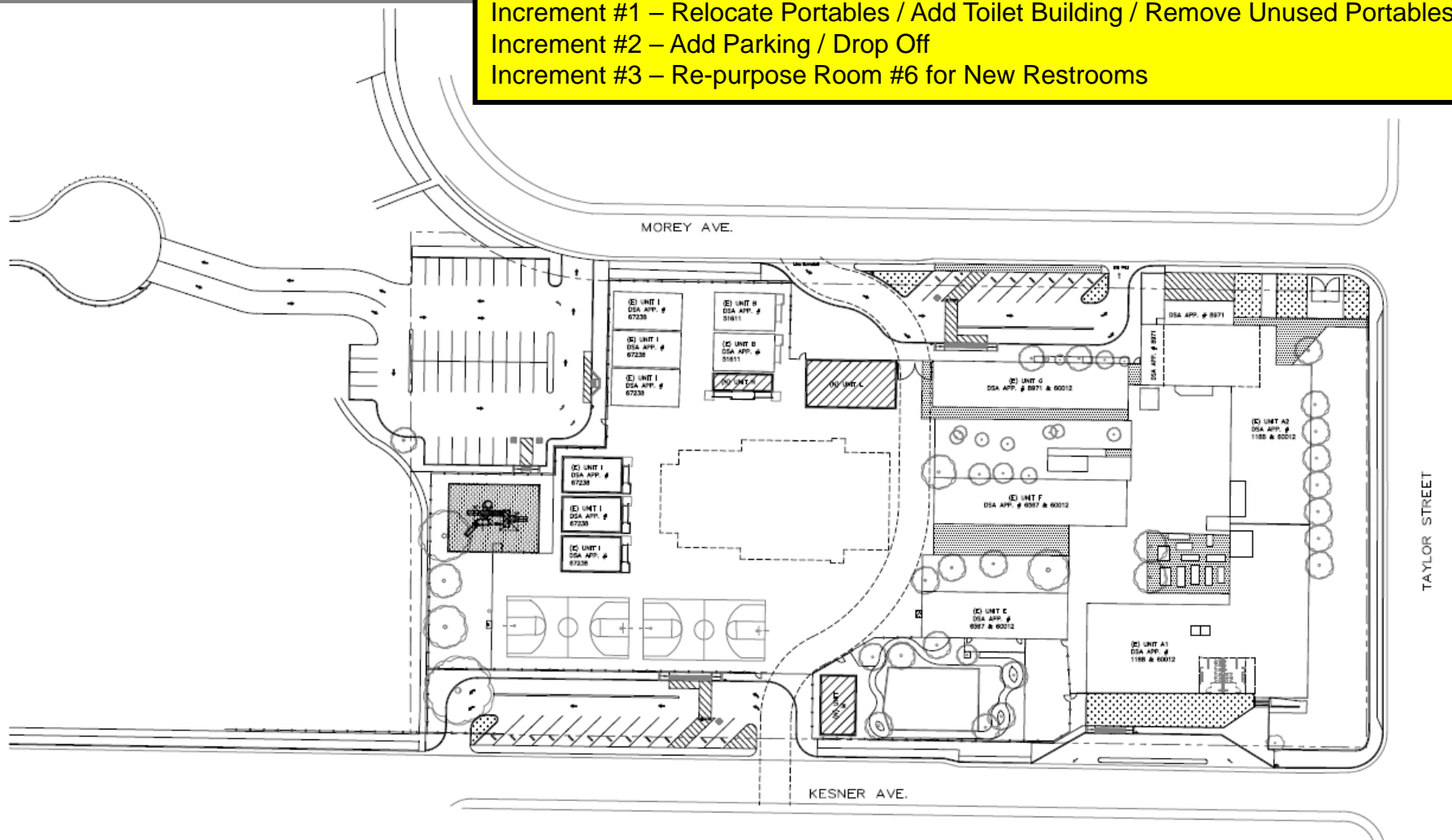
Stage

**STAFFORD
KING
WIESE**
ARCHITECTS



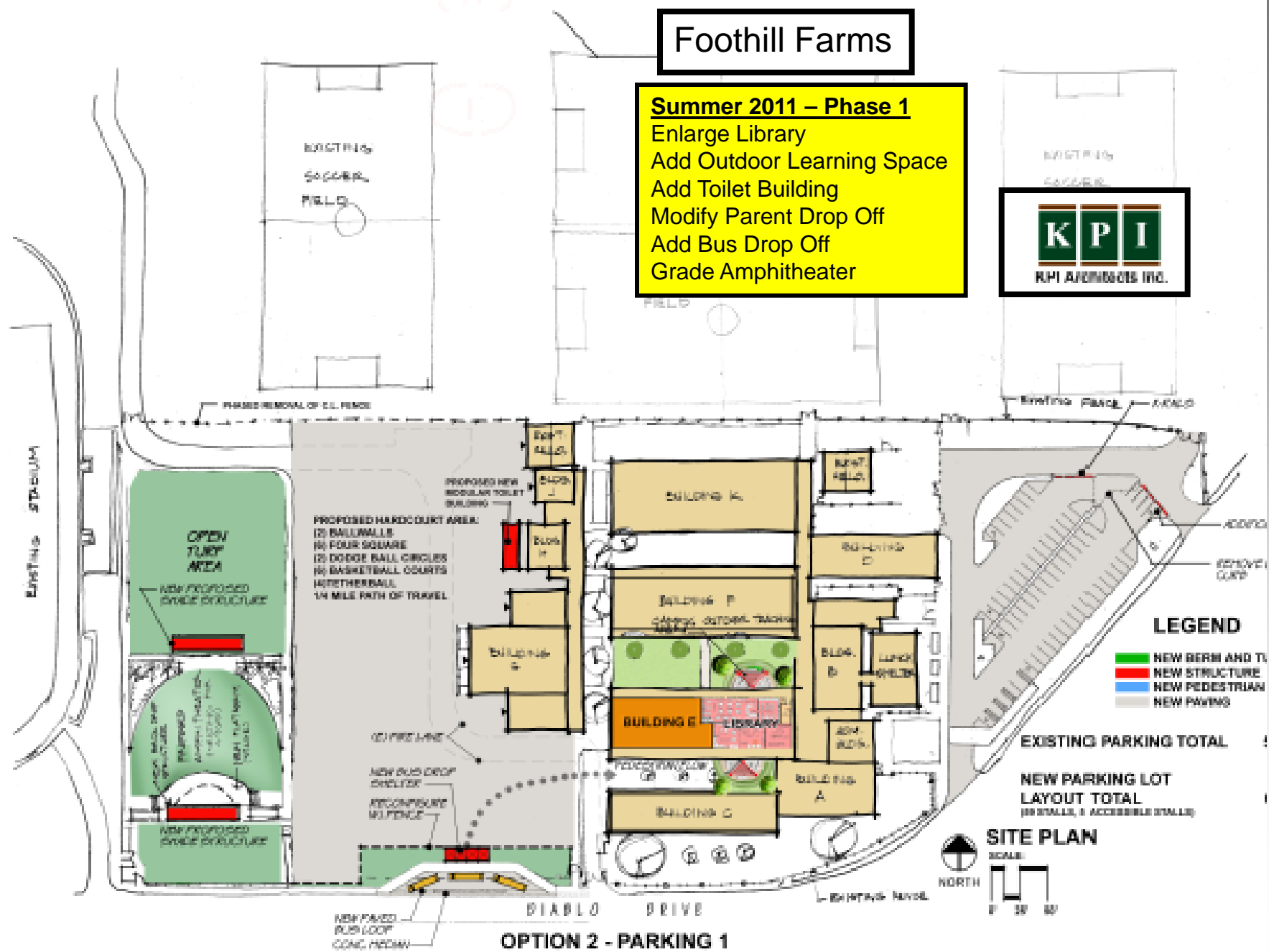
Del Paso ES

Summer 2011 – Phase 1
Increment #1 – Relocate Portables / Add Toilet Building / Remove Unused Portables
Increment #2 – Add Parking / Drop Off
Increment #3 – Re-purpose Room #6 for New Restrooms



Foothill Farms

Summer 2011 – Phase 1
 Enlarge Library
 Add Outdoor Learning Space
 Add Toilet Building
 Modify Parent Drop Off
 Add Bus Drop Off
 Grade Amphitheater



OPTION 2 - PARKING 1

Hillsdale Elementary School

Summer 2011
Construct Quad Area
Add Toilet Building



QUATTROCCHI KWOK
ARCHITECTS

11.14.01
1" = 30'



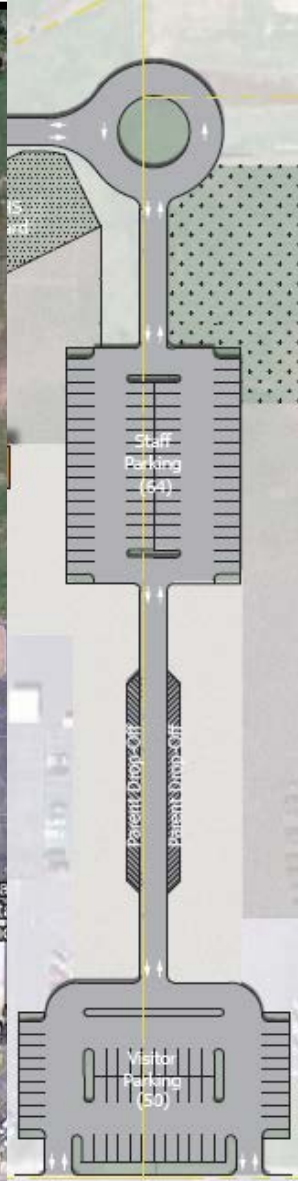
Johnson 2.0 Elementary School

Summer 2011 – Phase 2a

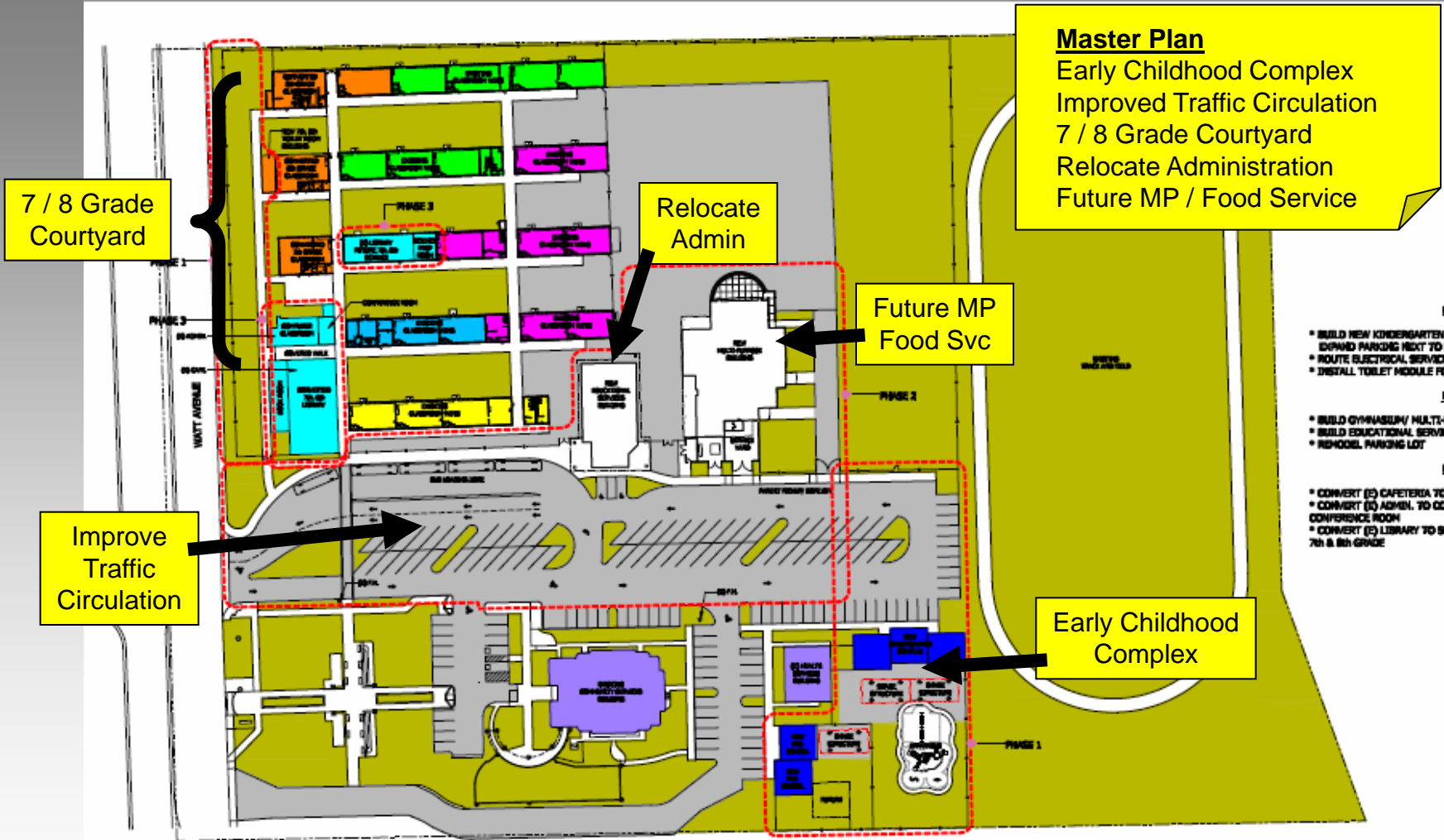
- Remove Health for All Clinic
- Relocate SETA to Noralto
- Realign Grades 3-6
- Improve Site Drainage
- Exterior Paint
- Renovate Parent Drop Off
- Add Bus Loop

School Year 2011/12 – Phase 2b

- ADA Toilets
- Renovate Kitchen
- Complete Classroom Modernization



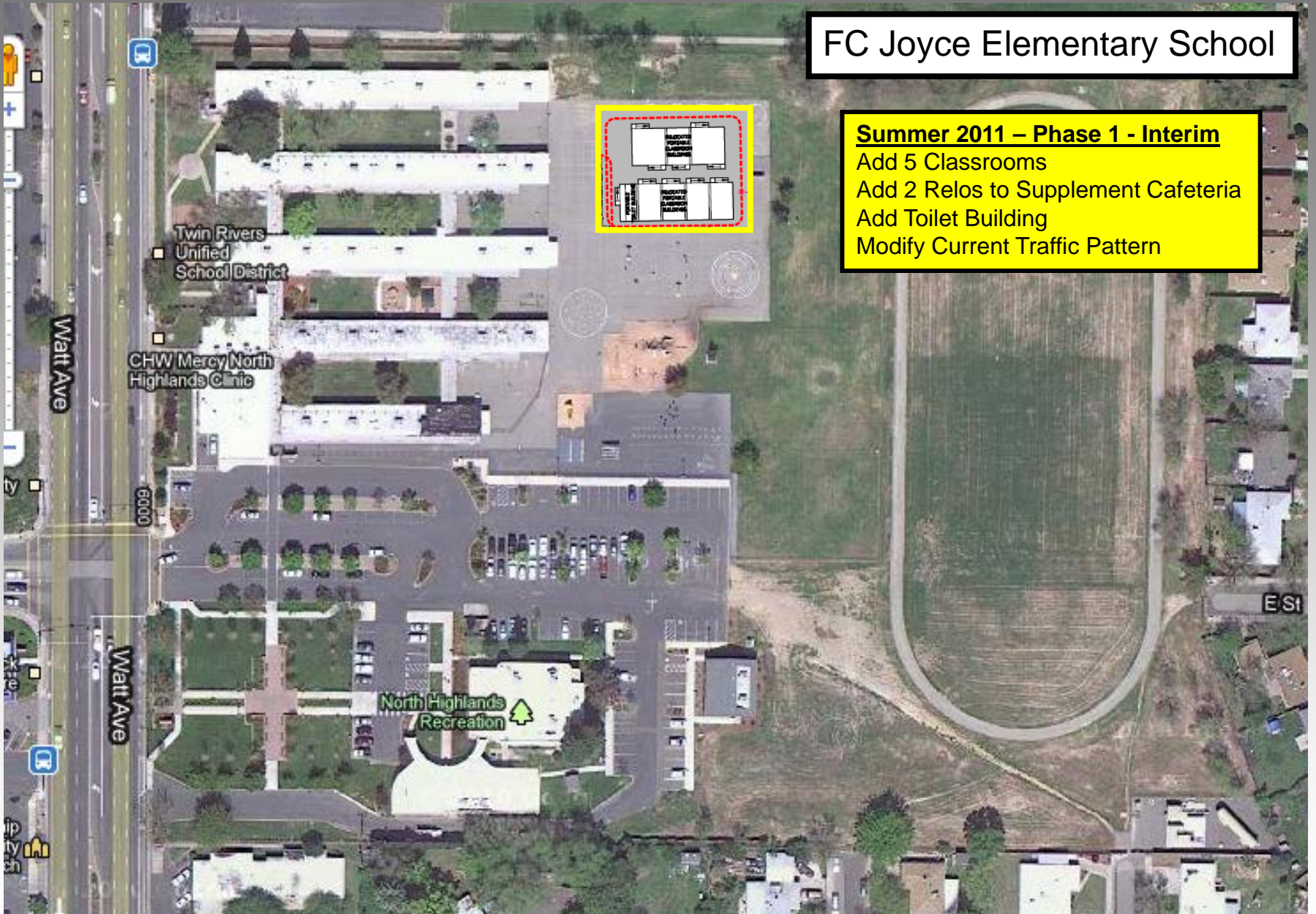
FC Joyce Elementary School



40'

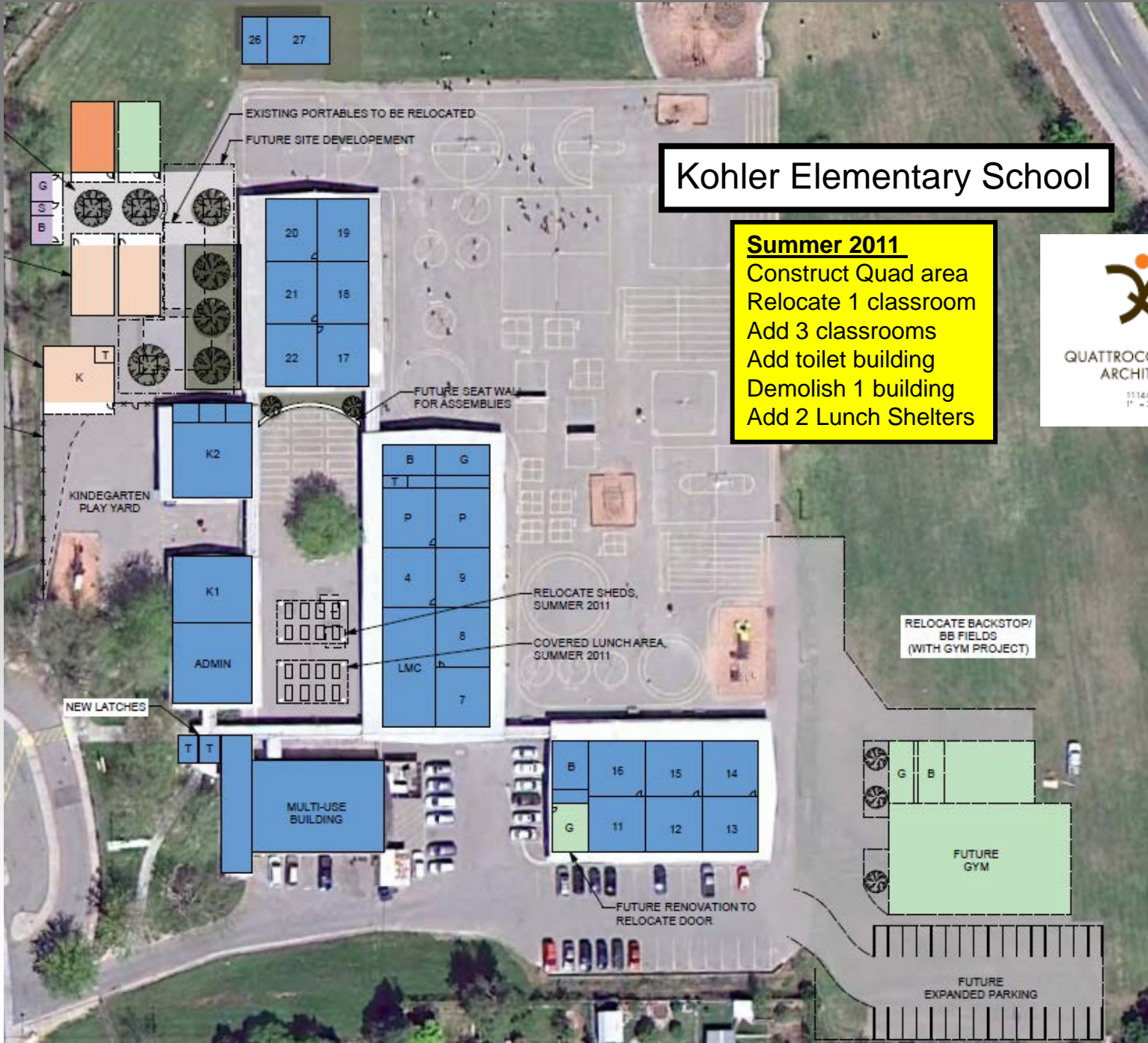
FC Joyce Elementary School

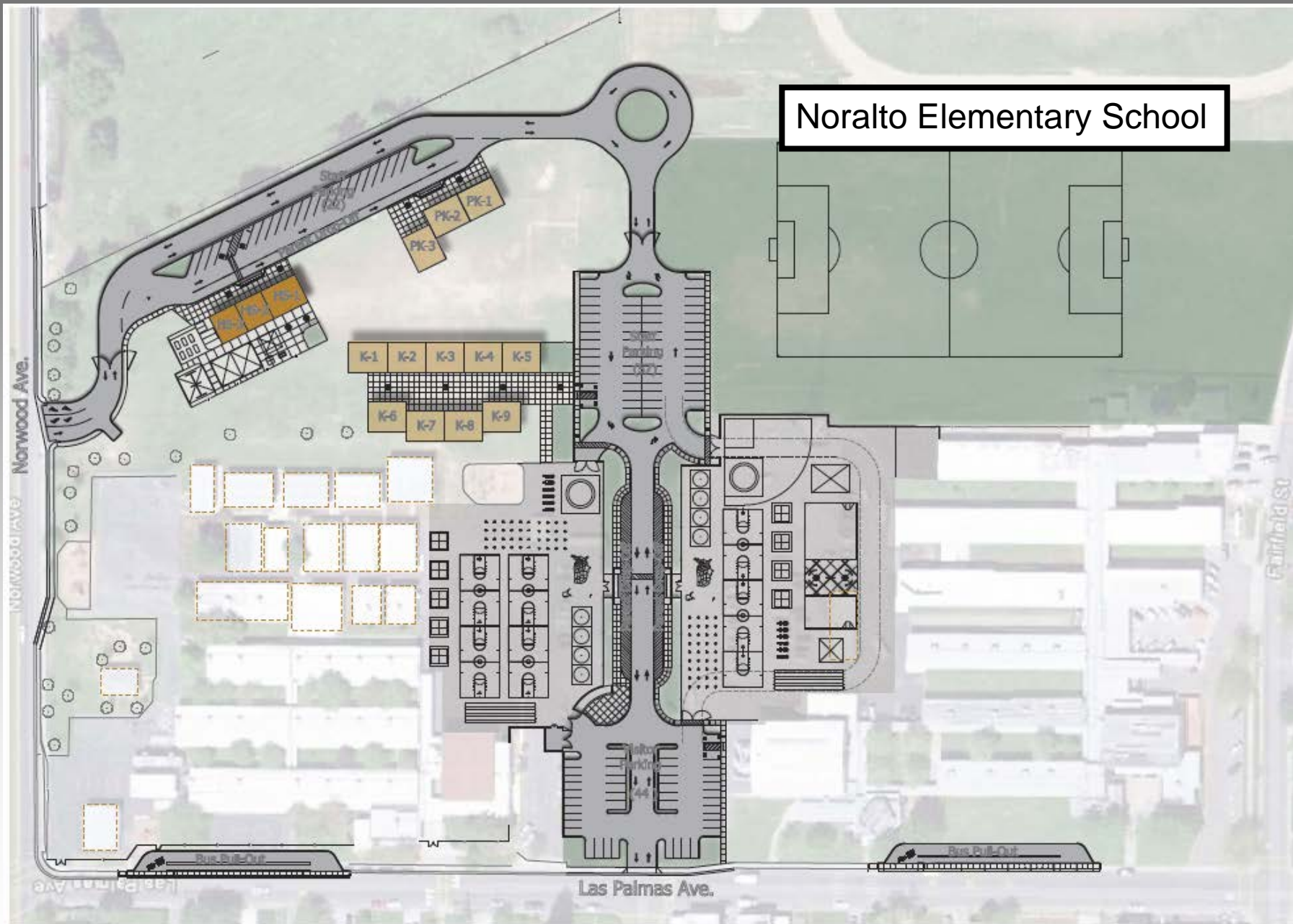
Summer 2011 – Phase 1 - Interim
Add 5 Classrooms
Add 2 Relos to Supplement Cafeteria
Add Toilet Building
Modify Current Traffic Pattern



Kohler Elementary School

Summer 2011
 Construct Quad area
 Relocate 1 classroom
 Add 3 classrooms
 Add toilet building
 Demolish 1 building
 Add 2 Lunch Shelters





Noralto Elementary School

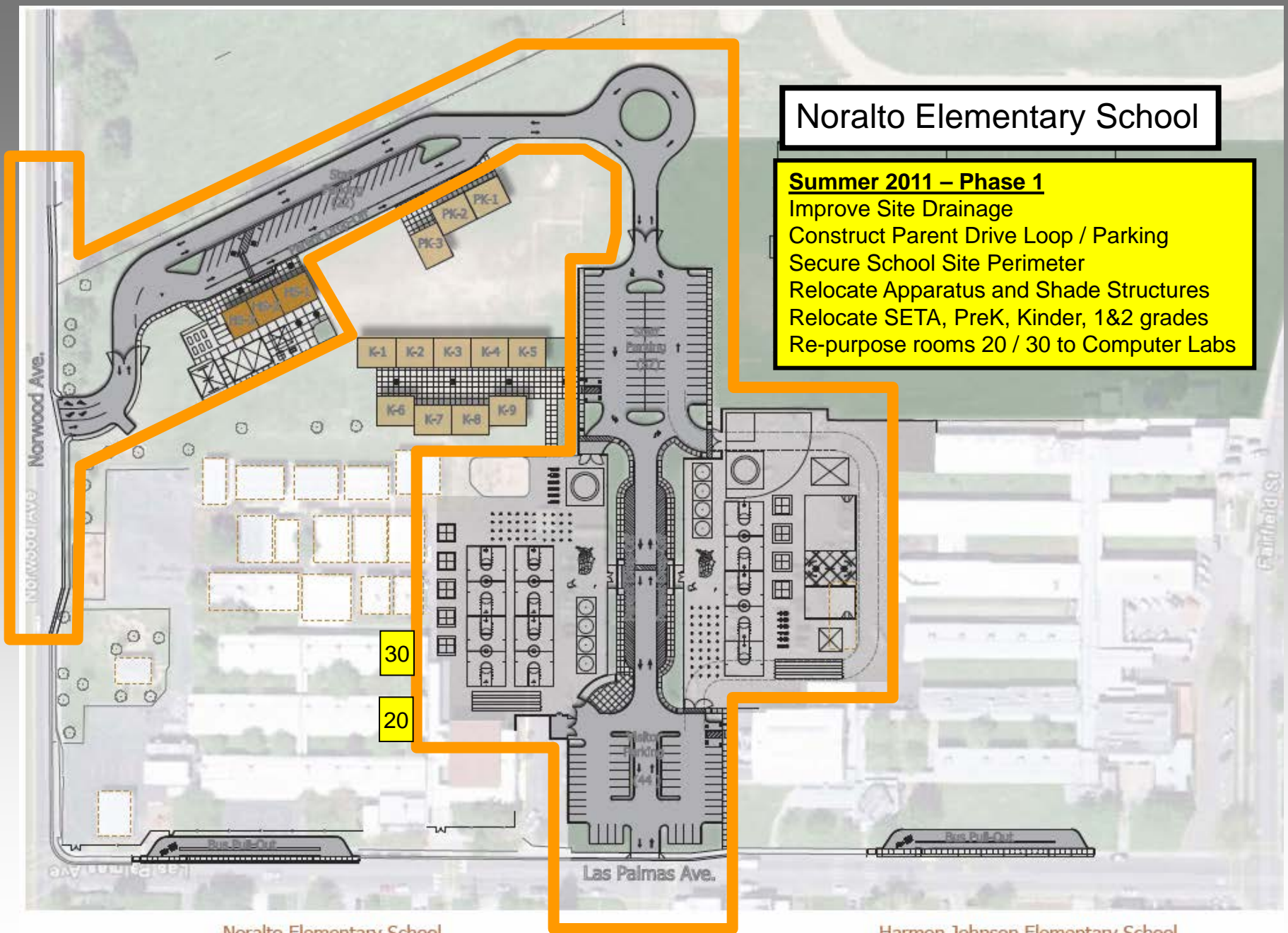
Noralto Elementary School

Harmon Johnson Elementary School
Las Palmas Adult School

Noralto Elementary School

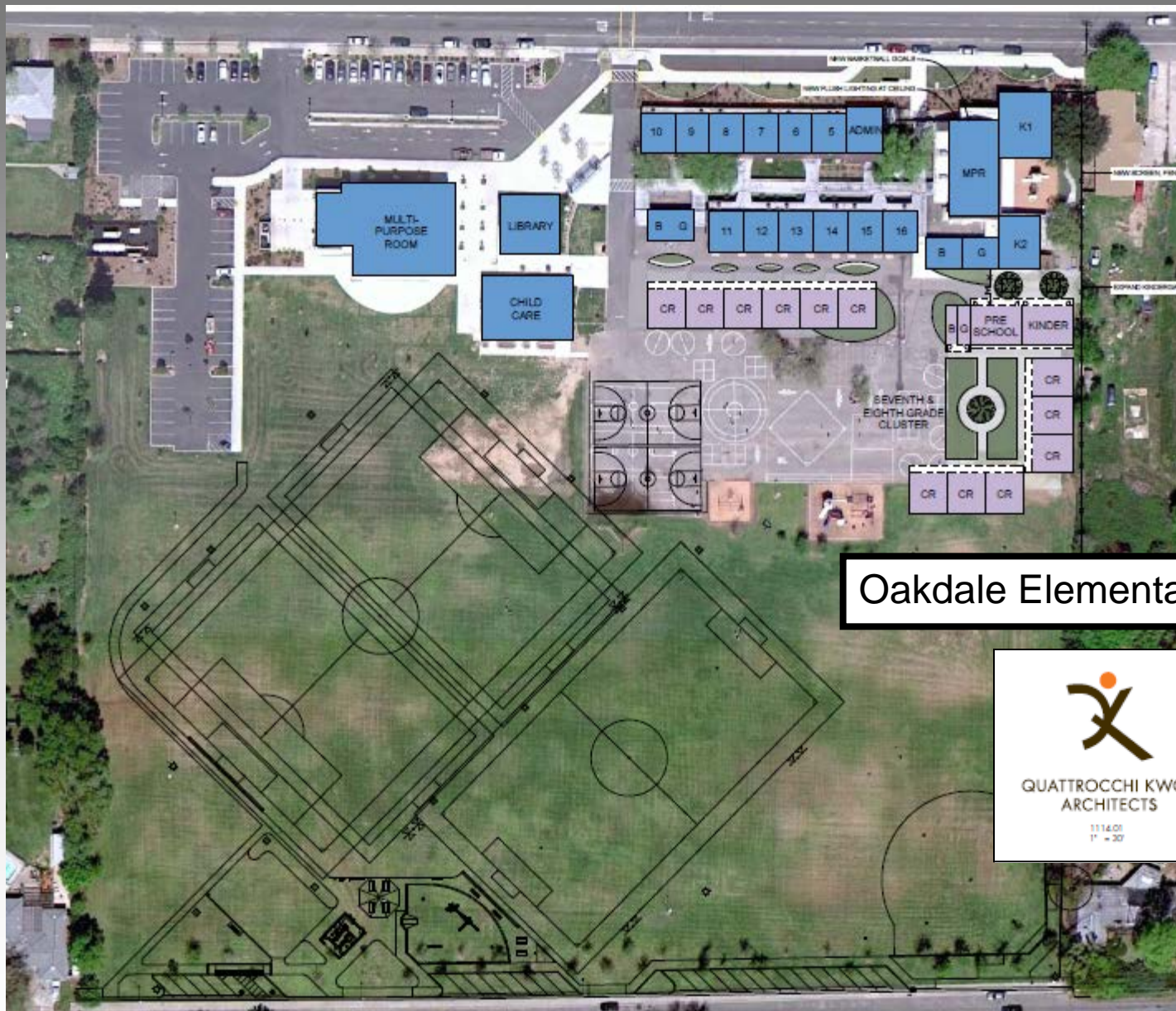
Summer 2011 – Phase 1

- Improve Site Drainage
- Construct Parent Drive Loop / Parking
- Secure School Site Perimeter
- Relocate Apparatus and Shade Structures
- Relocate SETA, PreK, Kinder, 1&2 grades
- Re-purpose rooms 20 / 30 to Computer Labs



Noralto Elementary School

Harmon Johnson Elementary School
Las Palmas Adult School



Oakdale Elementary School

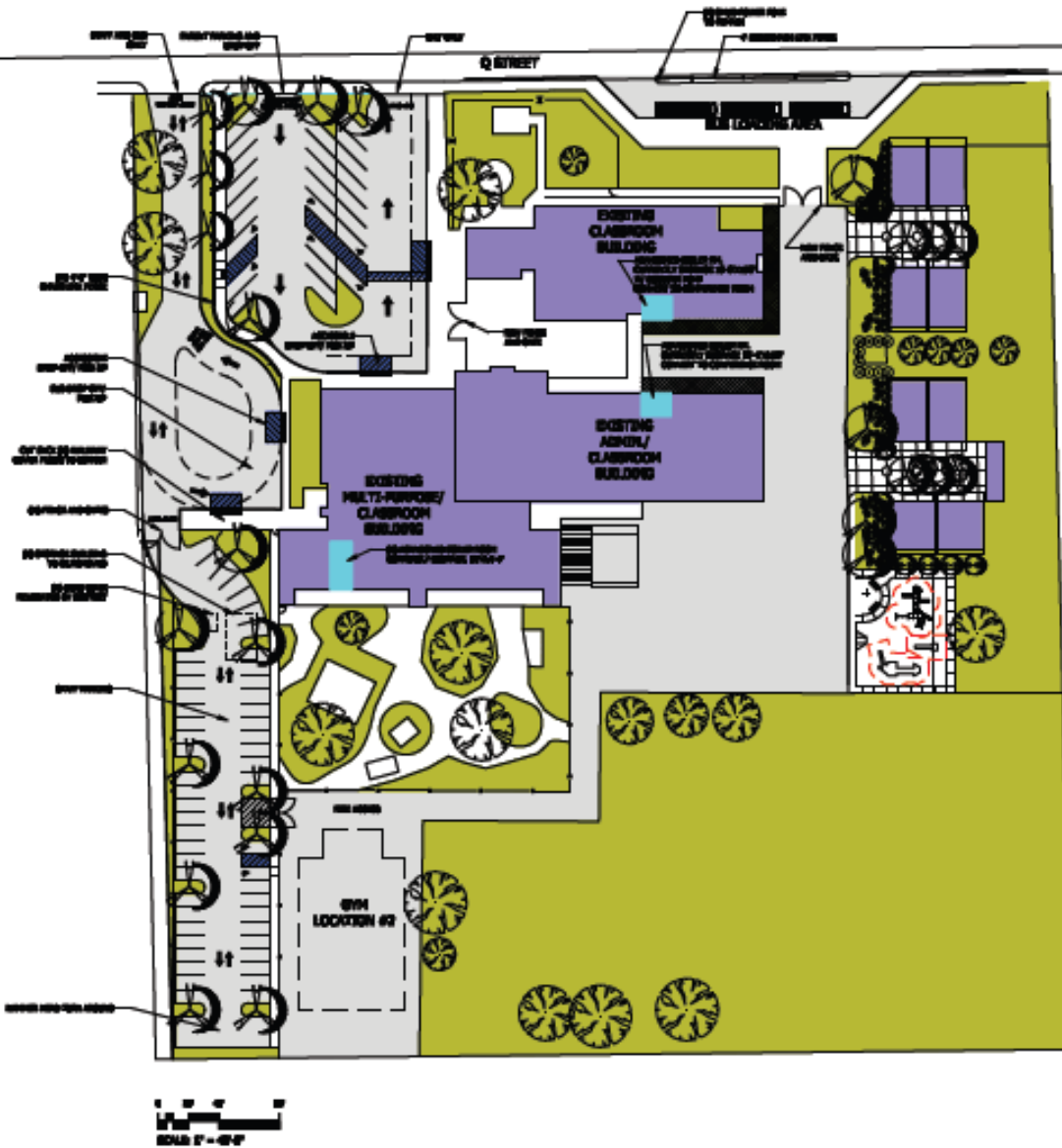




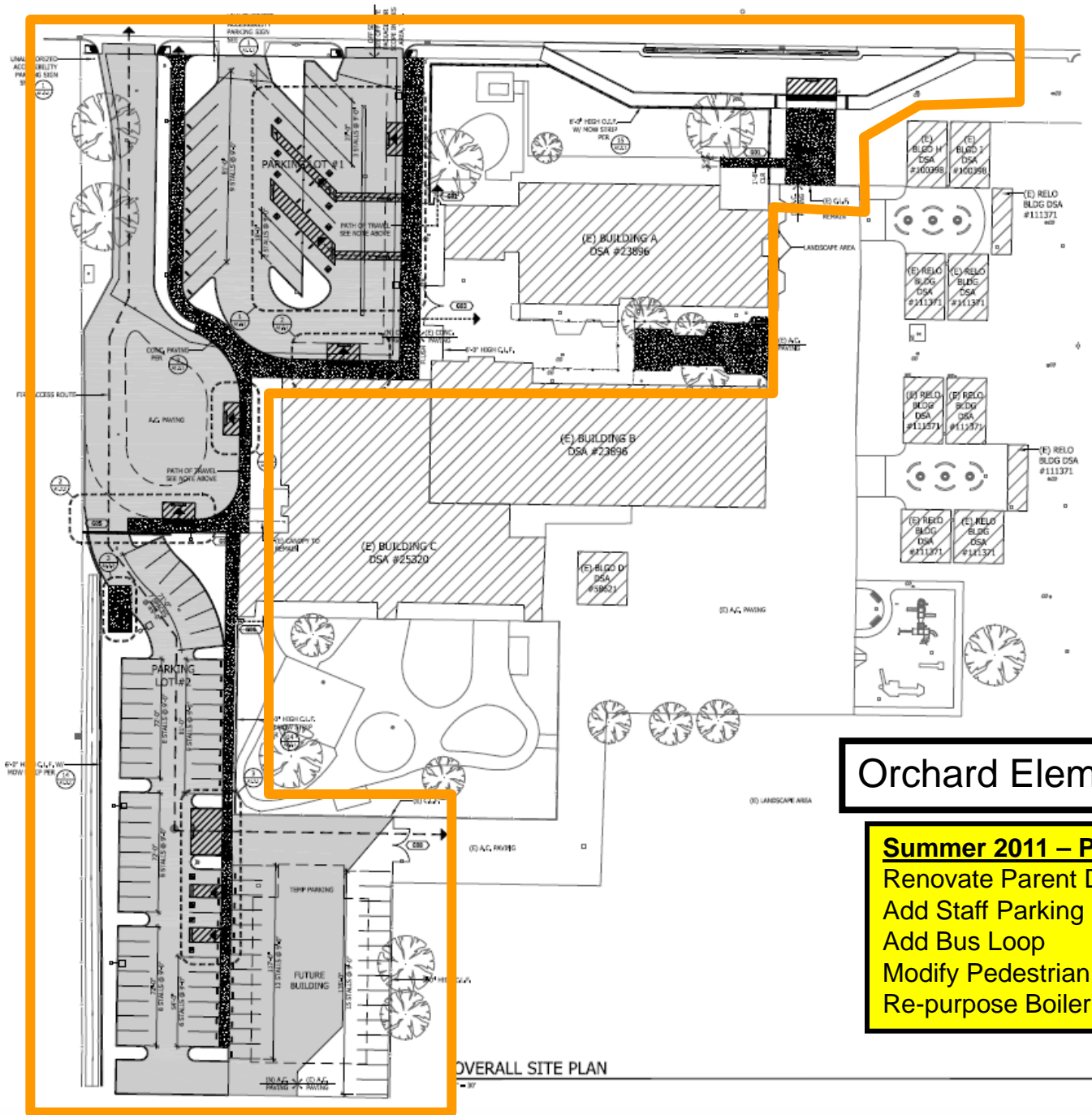
Oakdale Elementary School

Summer 2011 – Interim
Add 3 classroom buildings





Orchard Elementary School



Orchard Elementary School

- Summer 2011 – Phase 2**
- Renovate Parent Drop Off and Parking
- Add Staff Parking
- Add Bus Loop
- Modify Pedestrian Entry Areas
- Re-purpose Boiler Rooms

Ridgepoint Elementary School



QUATTROCCHI KWOK
ARCHITECTS
1114.01
1" = 30'

Ridgepoint Elementary School

Summer 2011 - Interim
Add 2 Classrooms
Rotate 1 Classroom



Village Elementary School

Summer 2011 – Phase 1
Construct Courtyard Area
Relocate 5 Classrooms
Add 4 Classrooms
Add Toilet Building
Add 2 Lunch Shelters

